



**SHOUKAT**  
LIMESTONE ARCADE

A PROJECT OF:



[WWW.SHOUKATARCADE.COM.PK](http://WWW.SHOUKATARCADE.COM.PK)

REDEFINE LUXURY LIVING IN THE TWIN CITIES



[WWW.SHOUKATARCADE.COM.PK](http://WWW.SHOUKATARCADE.COM.PK)



**SHOUKAT**  
LIMESTONE ARCADE

# A NEW ERA IN DEVELOPMENT

The twin cities are considered the most beautiful cities of Pakistan, Islamabad which ranks 2nd most beautiful capital of the world alongside its neighbour, Rawalpindi, are located in the heart of Pakistan.



# B I 7



# WHAT IS OUR PRIDE

-  Schools
-  Universities
-  Community Club
-  Zoo & Birds Aviary
-  Cricket Grounds
-  Football Grounds
-  Mosques
-  Food Courts
-  Safari Park
-  Pakistan Biggest Kids Fun Land
-  Lake
-  24/7 Security
-  Gym
-  Interchange (coming soon)
-  Mega Shopping Malls
-  Major Wide Roads Infrastructure
-  Easy access to GT Road and Motorway



# INTRODUCING A NEW STANDARD OF LIVING

Shoukat LimeStone Arcade is a commercial/residential project in Block-F of Sector B-17 (Multi Garden) which is an elegant & famous residential sector of MPCHS. Our project consists of three floors for commercial use and three floors for residential apartments.

The project has beautiful classic elevation with wide corridors and airy balconies in each apartment. The project has wide parking area on both front and back side of the building. We never compromise on the quality of our work.

[WWW.SHOUKATARCADE.COM.PK](http://WWW.SHOUKATARCADE.COM.PK)



  
SHOUKAT  
LIMESTONE ARCADE

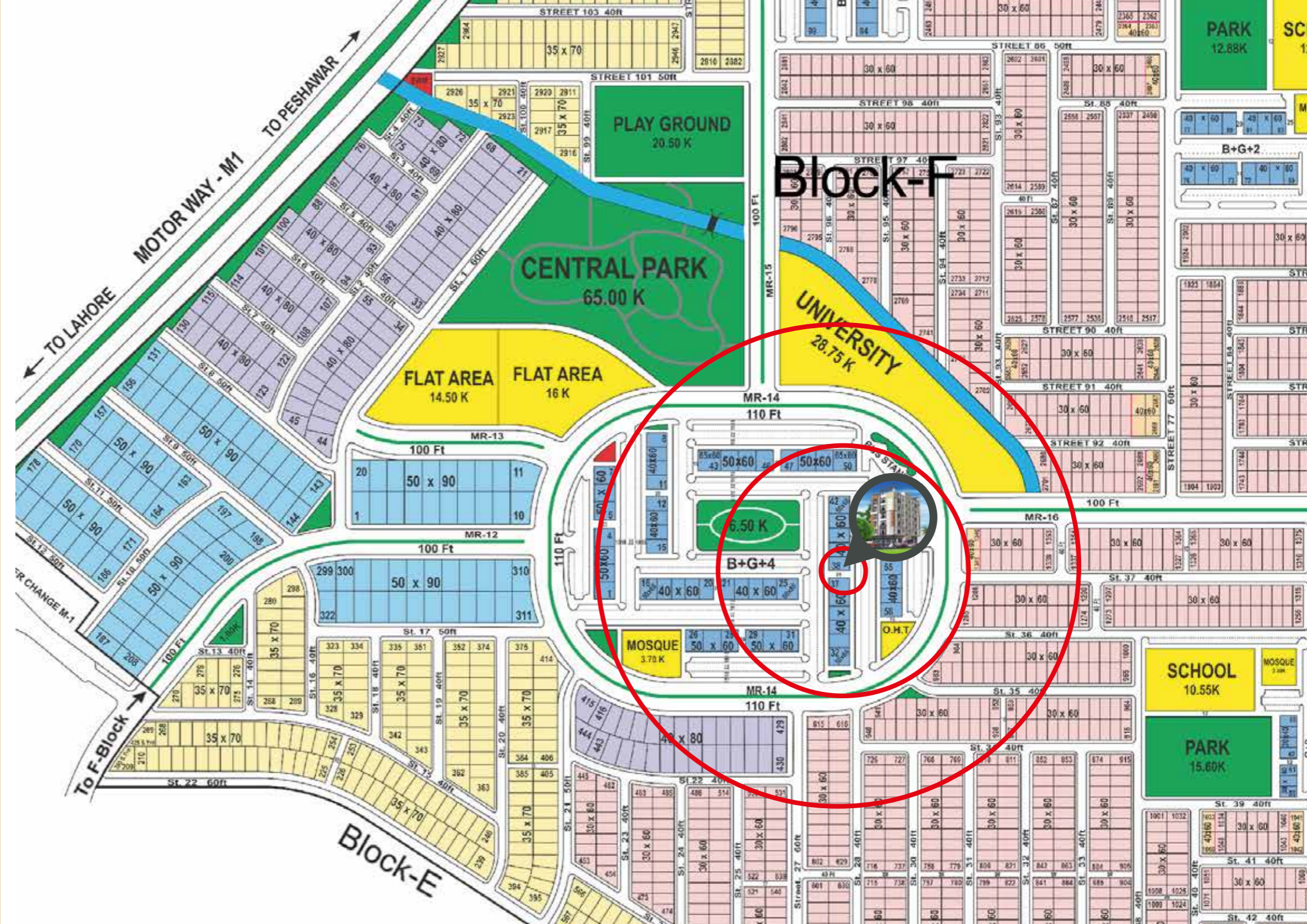
# THIS IS LIVING, THIS IS YOUR COMMUNITY

B-17 Multi Gardens (MPCHS) is a masterly planned area surrounded by natural beauty, affording breath taking view of the Margalla Hills. It would give feelings of dream coming true for those who prefer a serene community. Under neat and clean environment, the scheme would prove a project of its own class.

## WHAT'S IN YOUR NEIGHBOURHOOD?

- MOTORWAY ----- 13 KM
- GT ROAD ----- 02 KM
- AIRPORT ----- 25 KM
- ZERO POINT ----- 32 KM
- TAXILA ----- 10 KM
- SADDAR ----- 25 KM

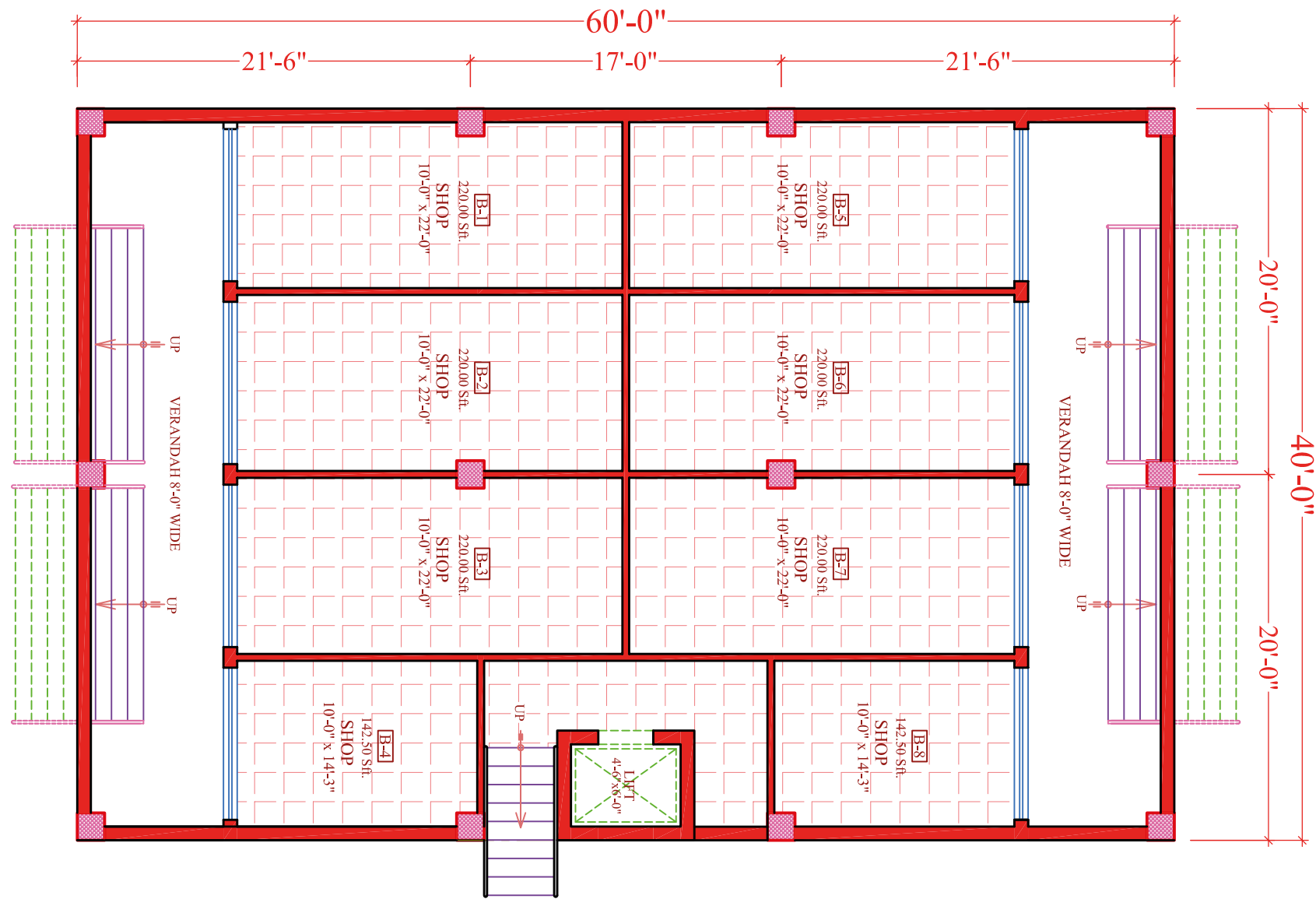
\*All distances are approximate. Addresses are indicative and used for marketing purposes.



# LOWER GROUND FLOOR PLAN

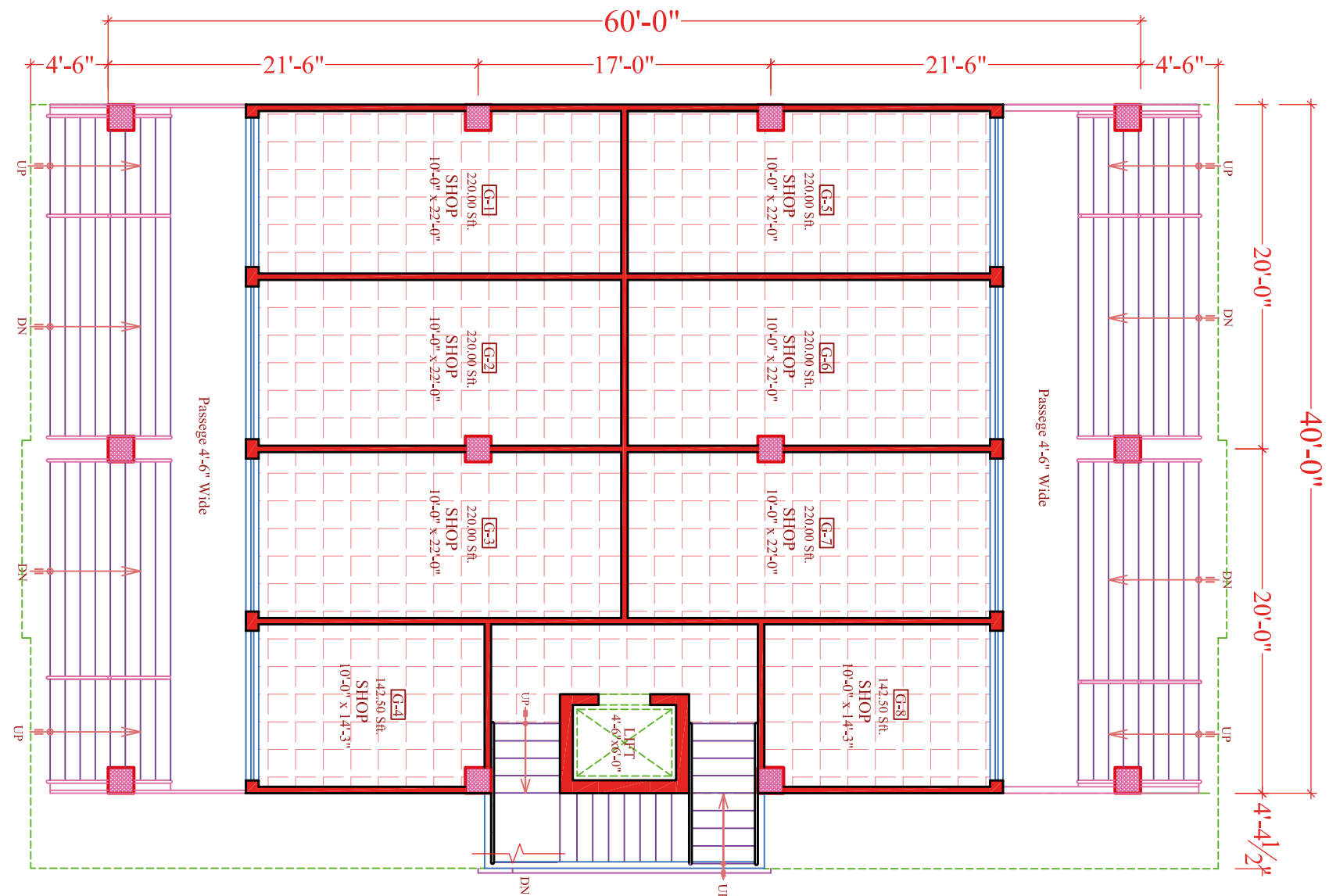


Unit Area	65.06 m <sup>2</sup>
Loggia	5.52 m <sup>2</sup>
<b>Total Area</b>	<b>72.58 m<sup>2</sup></b>
<hr/>	
Bedroom	4.60 x 4.00
Ensuite Bathroom	2.00 x 2.10
Powder Room	1.60 x 1.75
Kitchen, Dining & Living	8.50 x 5.00
Loggia	3.35 x 1.50



# GROUND FLOOR PLAN

**1** typical shops



<b>Unit Area</b>	65.06 m <sup>2</sup>
<b>Loggia</b>	5.52 m <sup>2</sup>
<b>Total Area</b>	72.58 m <sup>2</sup>
<b>Bedroom</b>	4.60 x 4.00
<b>Ensuite Bathroom</b>	2.00 x 2.10
<b>Powder Room</b>	1.60 x 1.75
<b>Kitchen, Dining &amp; Living</b>	8.50 x 5.00
<b>Loggia</b>	3.35 x 1.50



# SECOND TO FIFTH FLOOR PLAN

# 2

2 bed typical unit

Unit Area  
65.06 m<sup>2</sup>

Loggia  
5.52 m<sup>2</sup>

Total Area  
72.58 m<sup>2</sup>

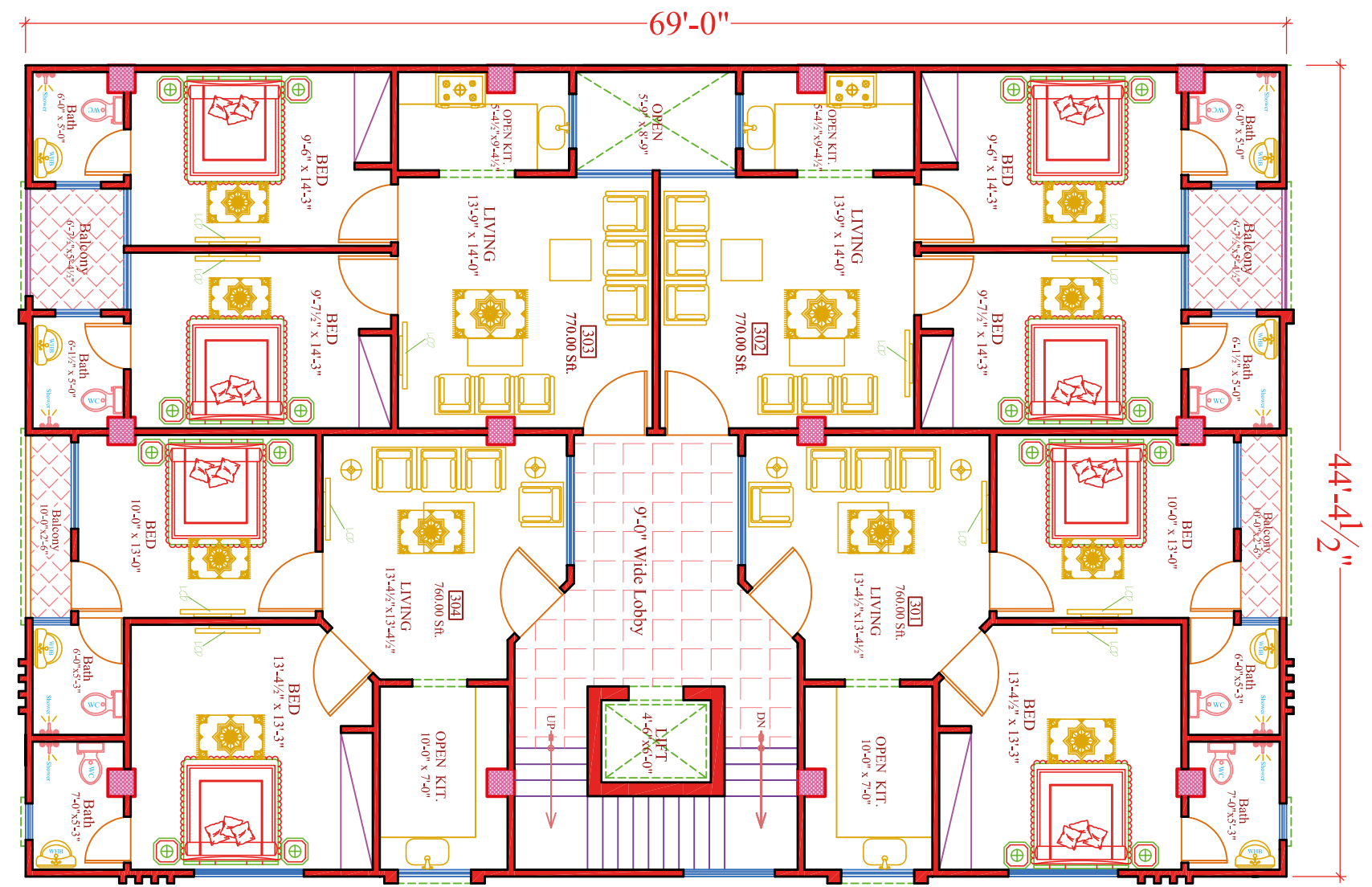
Bedroom  
4.60 x 4.00

Ensuite Bathroom  
2.00 x 2.10

Powder Room  
1.60 x 1.75

Kitchen, Dining & Living  
8.50 x 5.00

Loggia  
3.35 x 1.50



## SECOND TO FIFTH FLOOR PLAN

**2**  
2 bed typical  
unit

Unit Area  
65.06 m<sup>2</sup>

Loggia  
5.52 m<sup>2</sup>

Total Area  
72.58 m<sup>2</sup>

Bedroom  
4.60 × 4.00

Ensuite Bathroom  
2.00 × 2.10

Powder Room  
1.60 × 1.75

Kitchen, Dining & Living  
8.50 × 5.00

Loggia  
3.35 × 1.50



# OUR PREVIOUS PROJECTS

We have delivered many magnificent projects in the past few of them includes:

**Cloud Emporium** brings you living spaces steeped in utmost luxury by providing you the best apartments in Islamabad. A seven story residential building in civic centre of Gulberg Greens which is a flag ship project of IBECHS.

**Cloud Villas** 5 Marla Villas in B-17, high quality, energy efficient and cost effective residence to our customers, successfully delivered.

**Cloud Mall** a distinctive project in B-17 Multi Gardens, this six story shopping plaza is located at the premium location where the society is developing rapidly. With excellent rental value that is always an edge for investors.

**Pine Business Square** a six story residential plus commercial plaza is located in the most scenic sector of Capital Hills B-17, Islamabad. A bull's eye location has been chosen in Block B-1 Commercial. It is located at the cross roads of 650+ villas, parks, mosque, schools and college.

**5 & 8 Marla House** construction at its best in Bahria Enclave, Islamabad. LimeStone Constructions Pvt (Ltd.), is all for Building TRUST worthy relationship through delivering innovative excellence, practically implemented to ease up all the ends.

PINE BUSINESS SQUARE ▼  
(B-17)



CLOUD VILLAS (B-17) ▲



CLOUD MALL ▲  
(B-17)



5 MARLA HOUSE ▲  
(BAHRIA ENCLAVE)



CLOUD EMPORIUM ▲  
(GULBERG GREENS)